






# Isotop SD

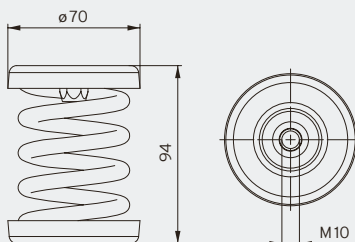
## Steel spring isolators

- Natural frequency from 3.2Hz
- Electro-galvanised or cathodic dip-coated (CDC) for increased corrosion protection
- Secure connection between the plate and the spring thanks to special adhesive
- M10 internal thread
- Suitable base plate and/or height adjustment available
- Base plate with damping element (FP/K) also isolates higher frequencies
- Simple load control thanks to open design
- Spring design conforms to DIN EN 13906-1

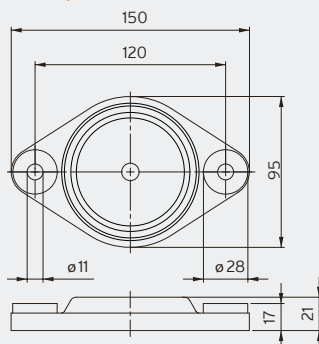
		Maximum load		Natural frequency at maximum load	Packaging unit	Order number
		in kg	in N			
<b>SD spring element galvanised</b> 	Isotop SD 1	20	196	3.2 Hz	50 pcs.	<b>39443</b>
	Isotop SD 2	33	324	3.2 Hz	50 pcs.	<b>39444</b>
	Isotop SD 3	52	510	3.2 Hz	50 pcs.	<b>39003</b>
	Isotop SD 4	82	804	3.2 Hz	50 pcs.	<b>39455</b>
	Isotop SD 5	123	1,206	3.2 Hz	50 pcs.	<b>39004</b>
	Isotop SD 6	195	1,913	3.2 Hz	50 pcs.	<b>39456</b>
	Isotop SD 7	310	3,041	3.2 Hz	50 pcs.	<b>39457</b>
	Isotop SD 8	420	4,120	3.4 Hz	50 pcs.	<b>39458</b>
	Isotop SD 9	525	5,150	3.4 Hz	50 pcs.	<b>39459</b>
<b>SD spring element KTL</b> 	Isotop SD 1 KTL	20	196	3.2 Hz	100 pcs.	<b>39460</b>
	Isotop SD 2 KTL	33	324	3.2 Hz	100 pcs.	<b>39461</b>
	Isotop SD 3 KTL	52	510	3.2 Hz	50 pcs.	<b>39462</b>
	Isotop SD 4 KTL	82	804	3.2 Hz	50 pcs.	<b>39463</b>
	Isotop SD 5 KTL	123	1,206	3.2 Hz	50 pcs.	<b>39464</b>
	Isotop SD 6 KTL	195	1,913	3.2 Hz	50 pcs.	<b>39465</b>
	Isotop SD 7 KTL	310	3,041	3.2 Hz	50 pcs.	<b>39466</b>
	Isotop SD 8 KTL	420	4,120	3.4 Hz	100 pcs.	<b>39467</b>
	Isotop SD 9 KTL	525	5,150	3.4 Hz	100 pcs.	<b>39468</b>
<b>Base plate FP/K with damping element for SD/DSD</b> 	Isotop FP/K 1-9		for SD 1 to 9	including screws <sup>1</sup>	50 pcs.	<b>38216</b>
	Isotop FP/K 1-9 KTL		for SD 1 to 9	including screws <sup>1</sup>	50 pcs.	<b>39158</b>
<b>Base plate FP for SD/DSD</b> 	Isotop FP 1-9		for SD 1 to 9	without screws	50 pcs.	<b>39536</b>
	Isotop FP 1-9 KTL		for SD 1 to 9	without screws	50 pcs.	<b>39537</b>
<b>Height adjustment for SD/DSD</b> 	Isotop NV 1-9	M10	for SD 1 to 9		50 pcs.	<b>47321</b>

<sup>1</sup> M10 connecting screws between base plate and spring

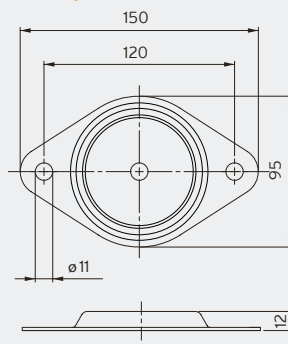
Isotop SD (unloaded)



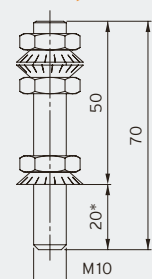
Isotop FP/K



Isotop FP



Isotop NV 1-9



\*Thread reach SD/DSD

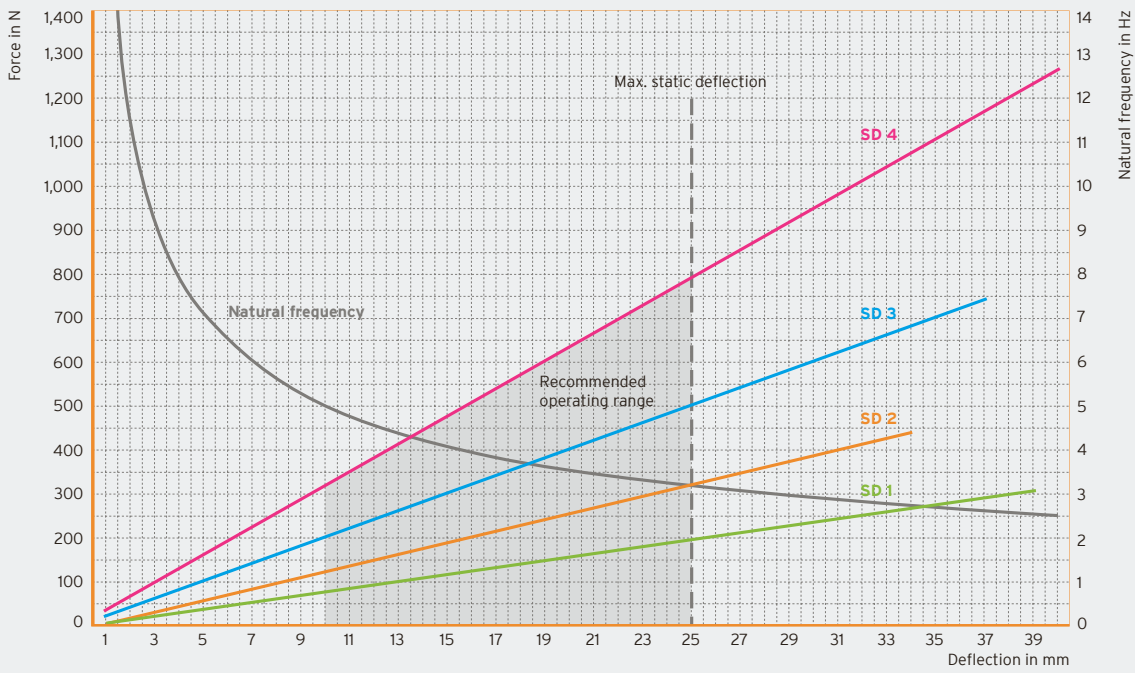


Bearing of belt-driven fans

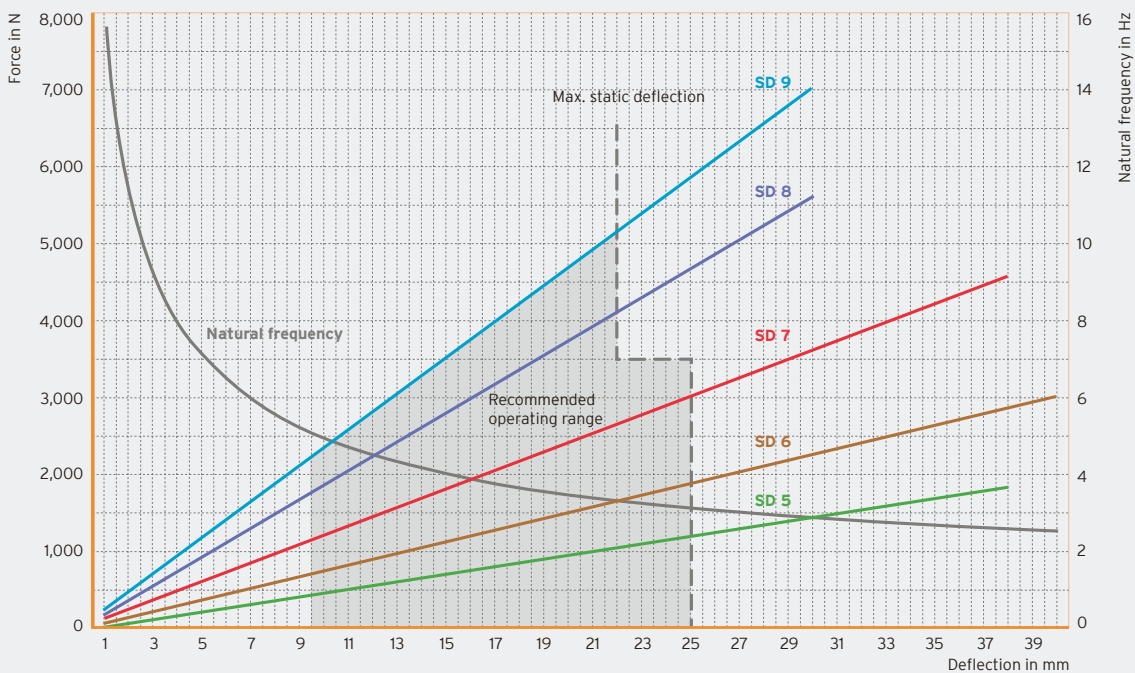


Bearing of HVAC unit with Isotop SD and Isotop FP/K

### Isotop SD1-SD4



### Isotop SD5-SD9



DB Isotop en © Copyright by Getzner Werkstoffe GmbH | 02-2022 | All information and data is based on our current knowledge. It can be used in calculations and for reference purposes, but is subject to product-specific and application-specific manufacturing tolerances and does not represent warranted properties. Material properties and their tolerances vary depending on the type of application and load and are available from Getzner on request. Subject to change without notice. For further general information, see VDI directive 2062 and glossary. Further characteristic values available on request.